

# EXHIBITION LONDON



# FOR THE USE AND BENEFIT OF THE PEOPLE OF LONDON

Blending heritage, design and culture under one roof, Exhibition London is Broadwick Live’s new impeccably restored grade II listed building, space and venue for music, culture, corporate events and celebrations situated in the heart of White City and the Westfield development.

This stunning Victorian structure was first built in 1899 and was originally used as an engine house for Central London Railways. Iconic TFL aesthetics remain in place, with the tiled interior walls and red brick lending unique character to this vibrant 3,185 sq metre venue, 2,300 capacity venue.

## KEY INFORMATION

### HOLDING CAPACITY

2,300 Including Guests

### VENUE HOURS

Operation hours are subject to license and set on a show by show basis.

### AGE RESTRICTIONS

16+

### KEY CONTACTS

Bookings  
Mark Newton - mark.newton@broadwicklive.com  
Ranen Ekubia - ranen.ekubia@broadwicklive.com

Operations  
Sam Spencer - sam.spencer@broadwicklive.com

Box Office & Ticketing  
Joe Morrison - joe.morrison@kaboodle.co.uk

**BROADWICKLIVE**









# A NEW MULTI-USE SPACE

## DRESSING ROOMS

Dressing Room 1 & 2: 16m<sup>2</sup> / Shower room, sofas and desks / Suitable for 6 guests

Dressing Room 3: 15.8m<sup>2</sup> / Sofas and desks / Suitable for 4 guests

Dressing Room 4: 11.6m<sup>2</sup> / Sofas and desks / Suitable for 4 guests

## CATERING

Catering can be arranged on-site. Please discuss your requirements with our Head of Operations.

## INTERNET

WiFi is available throughout the venue for artist and customer use.

## MERCHANDISE

Exhibition London has merchandise facilities located in the venue. Clients must arrange with venue management 14 days prior to event if they wish to use this facility. Further information is available upon request. 20% on Gross will be taken from all merchandise sold - Exhibition London will provide 1 seller and POS system.

## CLOAKROOM

The ground floor features a fully functional cloakroom for guests.

## BOX OFFICE

There is a professional, in-house box office and guest list team to cater for all show types. Further information supplied on request.

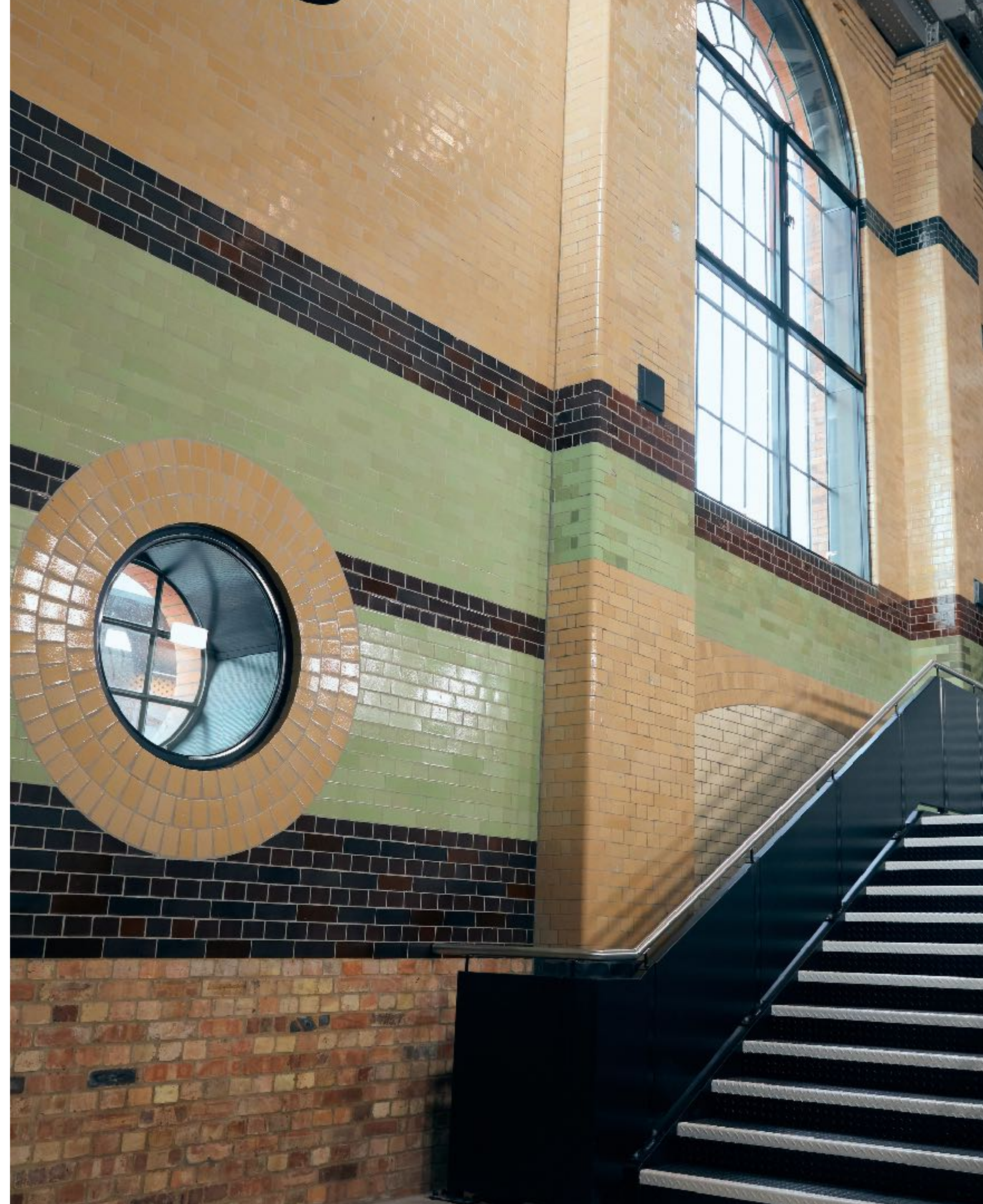
## PARKING

Please advance parking requests and requirements with our Head of Operations.

## SECURITY

Exhibition London work with Showsec Security and will base the security plan on risk assessment agreed with the promoter.

**BROADWICKLIVE**





# PRODUCTION SPECIFICATIONS

Exhibition is a purpose-built, with a strong technical in-house offering of pre-installed rigging, cable infrastructure and staging which can easily be added to any event.

## FLOOR LOADINGS

- The ground floor slab is primarily designed 5kN/m<sup>2</sup>
- The mezzanine levels have been designed to 5kN/m<sup>2</sup>

## INTERNET

- WIFI and hard-wired lines are distributed throughout the venue for client and event/show usage
- Free basic WIFI capped at 2Mbps down/1Mbps up per user is available for general browsing and email access for up to 100 users
- Hard wire connections &/or show specific WIFI SSID's and larger bandwidths are available through the on-site supplier NOBA, a rate card is available on request

## CCTV

- Camera coverage throughout the venue, this is also recorded and can be monitored in the CCTV Room

## FIRE ALARM SYSTEM

- Controllable system throughout the venue with smoke & heat sensing that can be operated in full or isolation for events with haze or special effects that may trigger the system. Please note that staffing costs will apply if alarms are required to be in isolation modes

## STAGE

- Standard layout is a 12,192mm (40') wide x 7,315mm (24') deep Prolyte/Lite Structures Lite Deck stage at 943mm high Treads are located USL & USR and stage ramp for loading in and out
- Handrail to rear and sides
- Black wool surge facia to all sides
- The staging can be modified and increased or decreased in size as required
- There is a Drum riser at 4,800mm (8') x 4800mm (8') at 200mm high (Additional charge applicable for this item - £255 Inc. Installation)

## RIGGING GROUND FLOOR

- 10 runs of 4m long standard scaffold pole under the mezzanine (blue on plan)

## FIRST FLOOR

- 2x 26m runs of Total Fabrication mega truss as mother grid above the main space, 5T UDL per truss, 3 runs of OB40 suspended beneath running up and down the room
- Total Fabrications ground support structure above the stage with, supporting 4 runs of OB40 box truss that can fly to stage level and out to 6.8m high 12T over the stage

## DRAPES

- US Drape hung from the ground support truss on tab track with 2m legs either side, creating a USL & USR stage entrance and exit

## POWER & DATA INFRASTRUCTURE

- 800a TPNE dedicated power allocation to events/shows

## STAGE AREAS HAS

- SR - 1x 400a TPNE supply distributed to
- 1x sets of Power Locks TPNE
- 1x 125a TPNE Ceform for house rigging power
- 3x 63a TPNE Ceform
- 3x 32a TPNE Ceform
- 6x 32a SPNE Ceform (2 per phase)
- 12x 16a SPNE Ceform (4 per phase)
- 6x 13a plug (2 per phase)
- SR – 1x 400a TP|NE supply distributed to
- 10x Socapex SR
- 4x Socapex Mother Grid A
- 4x Socapex Mother Grid B
- 4x Socapex Mother Grid C
- SL - 1x 125a TPNE Ceform
- 3x 63a TPNE Ceform, 9x 16a SPNE connections are distributed at floor level internally around the first floor the venue
- 2x 63a TPNE Ceform, 2x 32a TPNE, 12x 16a SPNE connections are distributed at roof level internally around the first floor of the venue
- 2x 32a TPNE, 12x 16a SPNE connections are distributed at roof level internally around the ground floor of the venue

Note:

- Single phase suppliers have 30ma RCBO protection
- Three phase suppliers have MCB protection, final circuits need to have RCD earth
- Leakage protection added
- Power connections are chargeable
- Liaise with Vibration Design and Production to confirm power requirements
- Not all power outlets can be fully loaded at the same time

# PRODUCTION SPECIFICATIONS

## DATA

- Luminex switches run throughout the venue for all data, this includes:

## SOUND

- Dante
- AVB
- QSC Control
- Lighting
- MA Net
- Artnet

## COMMUNICATIONS

- Green Go Coms

## INTERNET

- Facility Panels are located in the roof of the ground floor, on the first floor on each of the 3 mother grids, SL, SR and three front house, these are patched back to the racks in the plant room on the ground floor

### FP H/L A, B & C (Ground floor roof)

- 4x Speaker NL4
- 2x DMX (5pin XLR)
- 4x CAT6A Eithercon
- 2x Single Mode Quad Fibre (Neutrik Quad OpticalCON)
- 4x Balanced Audio (3Pin XLR, 2 Male & 2 Female)
- 3x 4K HDSDI

### FP M1, M2, M3 (Mother Grid A, B & C)

- 2x Speaker NL8
- 4x DMX (5pin XLR)
- 4x CAT6A Eithercon
- 2x Single Mode Quad Fibre (Neutrik Quad OpticalCON)
- 3x 4K HDSDI

### FP SL (Stage left)

- 4x CAT6A Eithercon
- 2x Single Mode Quad Fibre (Neutrik Quad OpticalCON)
- 2x Multi Mode Fibre Co. Senior
- 4x Balanced Audio (3Pin XLR, 2 Male & 2 Female)
- 4x 4K HDSDI

### FP SR (Stage right)

- 6x Speaker NL8
- 4x DMX (5pin XLR)
- 6x CAT6A Eithercon
- 6x Single Mode Quad Fibre (Neutrik Quad OpticalCON)
- 12x Balanced Audio (3Pin XLR, 2 Male & 2 Female)
- 4x 4K HDSDI

### FL FOH L, C & R

- 2x DMX (5pin XLR)
- 4x CAT6A Eithercon
- 2x Single Mode Quad Fibre (Neutrik Quad OpticalCON)
- 2x Multi Mode Fibre Co. Senior
- 8x Balanced Audio (3Pin XLR, 4 Male & 4 Female)
- 4x 4K HDSDI

# PRODUCTION SPECIFICATIONS

## STAGE

- Standard layout is a 12,192mm (40’) wide x 7,315mm (24’) deep Prolyte/Lite Structures Lite
- Deck stage at 943mm high
- Treads are located USL & USR and stage ramp for loading in and out
- Handrail to rear and sides
- Black wool surge facia to all sides
- The staging can be modified and increased or decreased in size as required
- There is a Drum riser at 4,800mm (8’) x 4800mm (8’) at 200mm high (Additional charge applicable for this item - £255 Inc. Installation)

## AUDIO

### First Floor

- Two flown arrays of 9x L’Acoustics K2 line array left and right and five dual stacks of L’Acoustics KS28 sub along the front of the stage on the floor, plus five L’Acoustics A10 front fills (one on each sub stack), then two flown arrays of 2x L’Acoustics A15 as rear delays, primarily to allow the main K2 arrays to be run at lower levels for speech applications
- Floor Monitors – Twelve L’Acoustics X15 floor monitors as 12 separate amp channels plus two stacks of 2x L’Acoustics A15 and 2x L’Acoustics KS21 as general purpose DJ/Drum/Side fills
- Portable Option – The option of two portable stacks of L’Acoustics Syva/Syva Low “column” speakers for lower SPL or speech applications in the main space where the main K2 system is inappropriate, or if a more flexible configuration is needed.

### Ground Floor

- Eight L’Acoustics X8 compact point source loudspeaker and four L’Acoustics SB15m sub configured 4x X8 and 2x SB15 along each side of the room, suspended from threaded rod and wedge nuts in the ceiling

## MIXING CONSOLES

- Space 1 - A pair of Digico SD12 consoles sharing an SD Rack loaded with 32 Bit I/O cards, connected via Optocore
- Space 2 – a rack mounted Digico SD11i in a mobile rack, with a D-Rack remote stage box linked via CAT6

## RADIO MICS

- Eight channels of Shure Axient Digital, all with both HH and Beltpack transmitters, B58 heads and DPA lapel/headsets.

## **BROADWICKLIVE**

## MICROPHONES

- A range of industry-standard microphones, DIs and stands for live music and corporate applications, from Shure, Sennheiser, AKG, Audio Technica, K&M and Radial

## PLAYBACK/RECORDING

- Two racks, each containing a Denon DN-700CB media player with CD, and DN-700R USB/SD Recorder

## DJ EQUIPMENT

- Two sets of 2x Pioneer CDJ2000 and 1x DJM900

## COMMS

- Green Go networked wired and wireless comms – 12 wired pack, 6 wireless pack, 1x desk station, 1x rack station, single and dual muff headsets, chargers spare batteries

## ASSISTIVE LISTENING

- A Sennheiser 4ch MobileConnect master station connected to the building WIFI

## SYSTEM CONTROL

- A QSC Q-SYS 510i Core loaded with analogue I/O plus Dante and AVB cards to connect between all venue audio systems. Custom-programmed touchscreen control panels for easy system control and recall of different system configurations. Central control PC with remote support

## IN EAR MONITORING

- Four channels of Shure PSM1000 IEM TX/RX with generic earphones

## ADDITIONAL LOUDSPEAKERS

- Eight Martin Audio CDD5 across the toilets and Green Rooms

## NETWORK INFRASTRUCTURE

- Nine Luminex Gigacore 26i Ethernet switch with SM fibre SFP configured as one central pair and three remote pairs of PoE/non PoE as a central backbone, plus an additional PoE for additional comms



# PRODUCTION SPECIFICATIONS

## RIGGING

### Ground Floor

- 10 runs of 4m long standard scaffold pole under the mezzanine (blue on plan)

### First Floor

- 2x 26m runs of Total Fabrication mega truss as mother grid above the main space, 5T UDL per truss, 3 runs of OB40 suspended beneath running up and down the room
- Total Fabrications ground support structure above the stage with, supporting 4 runs of OB40 box truss that can fly to stage level and out to 6.8m high 12T over the stage

### Drapes

- US Drape hung from the ground support truss on tab track with 2m legs either side, creating a USL & USR stage entrance and exit

## PLANT & ACCESS

- 2x Scissor lift for venue staff/operations, these can reach the roof, can only be operated by venue staff and an additional charge is applicable for show usage - £275 Per Day Use excluding any additional drivers required
- 2x Skyjack SJIII 3226 Battery Scissor Lift
- 7.9m raised platform
- 9.9m working height
- 2.32m long x 0.81m wide, 0.91m extension deck

Please Note: All items of equipment are subject to change or replacement and an alternative piece of equipment of the same standard will be offered

## LIGHTING

### House Lighting

- All venue working lights are dimmable with local control panels
- First floor chandeliers and wall lights are on dimmable DMX control that is connected to the lighting console

LED RGB lighting is located all side windows, controlled by the lighting console

- Performance Lighting
- 24x Robe Esprit Profile on stage
- 24x Robe Spider LED Wash on stage
- 2x Robe BMFL remote follow spot units, with 2 controllers
- 12x Prolights Sunrise 4 lamp blinder on stage (Additional charge applicable for this item
- - £29 Per fixture Per 3day Week + Installation where required)
- 12x Ayton Miniburst moving strobes on stage (Additional charge applicable for this item - £175 Per fixture Per 3day Week + Installation where required
- 24x Prolights Eclipse Profile for FOH wash of the stage and spare for specials
- 48x Robe Divine 160 LED Flood throughout the first floor to wash entire venue
- 12x Robe LED Uplighters with wireless DMX controller (Additional charge applicable for this item - £50 Per unit Per 3day Week
- Grand MA3 lighting control system and network, consisting of:
- 1x grandMA3 Light (Portable FOH Console, (Additional charge applicable for this item - £675 Per 3day Week
- 1x grandMA3 Processing Unit Large (Located in Plant Room BOH)
- Luminex DMX/Ethernet distribution (Located in Plant Room BOH)

### Haze

- 2x MDG ATMe hazers (Additional charge applicable for this item- £85 Per unit 3Day Week)



# PRODUCTION SPECIFICATIONS

## COMMUNICATIONS

- Motorola radio system (Digital trunked system with 3 PMSE channels)
- The radios are set up for the venue and channel the configuration needs to stay the same as below, there is one client channel available and client radio's or additional client channels can be hire from Vibration design & production

### Items:

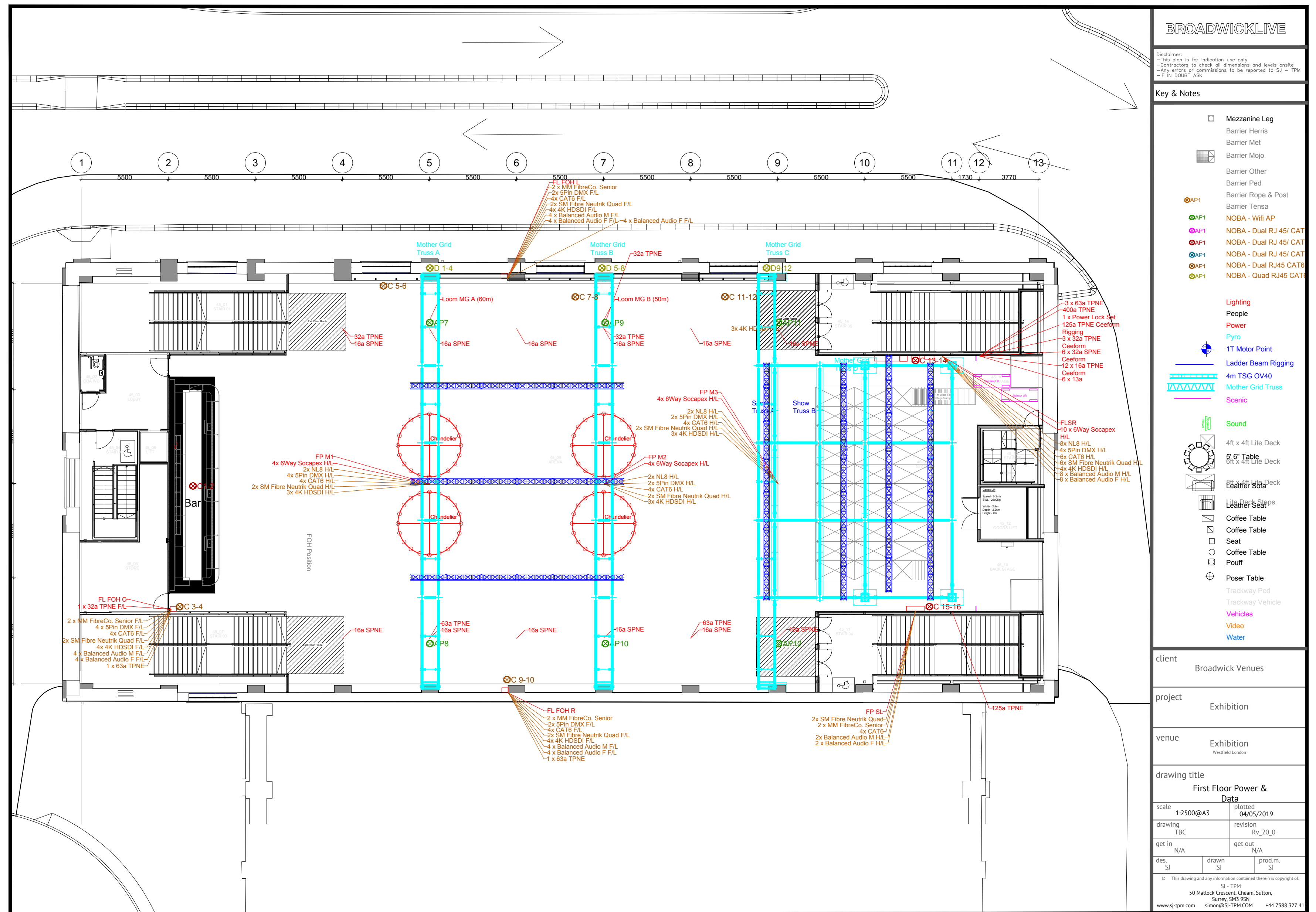
- 39x Motorola DP4400E UHF
- 14 for Venue operations
- 6 for Catering & Bars
- 18 for Production team
- 1 for URW
- Additional radios for clients are available for hire
- 1x Base station & repeater mounted in plant deck
- 38x D Earpieces
- 12 bags/shoulder straps
- 12x Broaches
- 38x spare batteries with clips
- 6x 6way chargers
- 3x single chargers
- Channels/Groups:
- Event Control (Trunk)
- Security (Trunk)
- Medical (Trunk)
- Venue Management (Trunk)
- Traffic (Simplex)
- Cleaning (Simplex)
- Catering (Simplex)
- Bars (Simplex)
- Technical (Trunk)
- Show Call (Simplex & linked to Green Go coms system)
- Lighting (Simplex)
- Sound (Simplex)
- Video (Simplex)
- Rigging (Simplex)
- Client (Simplex)
- All Call to all trunk channels (Trunk)
- Additional Radios available for hire into the system

## BROADWICKLIVE





775 sq m | 38m(l) x 25m(w) x 8m(h)





FLOOR PLAN

FIRST FLOOR: FRONT ELEVATION



BROADWICKLIVE

Disclaimer:  
- This plan is for indication use only  
- Contractors to check all dimensions and levels onsite  
- Any errors or commissions to be reported to SJ - TPM  
- IF IN DOUBT ASK

Key & Notes

- Mezzanine Leg
  - Barrier Hennis
  - Barrier Met
  - Barrier Mojo
  - Barrier Other
  - Barrier Ped
  - Barrier Rope & Post
  - Barrier Tensa
- AP1
  - NOBA - Wifi AP
  - NOBA - Dual RJ 45/ CAT
  - NOBA - Dual RJ 45/ CAT
  - NOBA - Dual RJ 45/ CAT
  - NOBA - Dual RJ45 CAT
  - NOBA - Quad RJ45 CAT
- Lighting
- People
- Power
- Pyro
- 1T Motor Point
- Ladder Beam Rigging
- 4m TSG OV40
- Mother Grid Truss
- Scenic
- Sound
  - 4ft x 4ft Lite Deck
  - 5'6" Table
  - 8ft x 4ft Lite Deck
  - 8ft x 4ft Lite Deck
  - Leather Sofa
  - Leather Seat
  - Leather Seat
  - Coffee Table
  - Coffee Table
  - Seat
  - Coffee Table
  - Pouff
  - Poser Table
  - Trackway Ped
  - Trackway Vehicle
  - Vehicles
  - Video
  - Water

client  
Broadwick Venues

project  
Exhibition

venue  
Exhibition  
Westfield London

drawing title  
Front Elevation

scale	1:1250@A3	plotted	04/05/2019
drawing	TBC	revision	Rv_20_0
get in	N/A	get out	N/A
des.	SJ	drawn	SJ
		prod.m.	SJ

© This drawing and any information contained therein is copyright of:  
SJ - TPM  
50 Matlock Crescent, Cheam, Sutton,  
Surrey, SM5 9SN  
www.sj-tpm.com    simon@sj-tpm.com    +44 7388 527 41



**BROADWICKLIVE**

<







# LICENSING

Licensable activity falls under the control of Exhibition London and the on-site staff. Direction should be taken from the Event Manager and DPS.

No event may breach the venue's licensing conditions and should the case arise, the venue management team will intervene.

License information available on request.

PRS & PPL is the responsibility of the promoter.

Key documentation should be submitted 2 weeks prior to the event date.

These include but are not limited to:

- PLI (£10 mil minimum)
- RAMS
- Production Schedule
- Stage & Production Plan
- Artist List
- Special FX Details
- Structural Sign Off (For any items brought in)
- PAT & Electrical Specs
- Event Specific Management Plan





# TICKETING

## BOX OFFICE

The venue house box office is Kaboodle and requires 50% of the saleable capacity. Kaboodle provides all box office staff for shows.

## ON THE DOOR SALES

Tickets may be sold on the door on event day. Exhibition London must be informed of on the door sales and any information on marketing this 48 hours prior to doors opening.

## GUEST LIST

Any guest list must be included in the overall capacity and not additional. The final guest list numbers must be signed off by the Operations Manager at least two hours prior to doors opening.

## ACCREDITATION & PASS SYSTEM

Exhibition London must be informed any accreditation passes and the number used. The security contractor must also be made aware of the pass system in use, with pass sheets provided at all key locations.

## HOLDS

There are standard holds on all shows until production details are confirmed. These include holds for mixer, stage size, filming, additional disabled areas and sight-lines. These holds can be released as soon as the required confirmations are received by the Operations Manager from the Promoter.





# EVENT OPERATIONS

An Emergency Liaison Team (ELT) will be operated throughout major live events or where the operations team feel necessary. This team will include a representative from the venue, promoter, medical and security team.

Radios must be supplied to the venue, ELT and key staff for open channels of communication throughout the event.

Exhibition London can operate 16+ live shows. This must be agreed by the venue on confirmation. Anyone between the ages of 16-17 must be accompanied with an adult at all times.

There are no special effect facilities provided by the venue. SFX facilities can be accommodated upon request in advance with the venue Production Manager. Flames strictly forbidden.

Exhibition London cannot store any equipment after the day of the event and as such, any production equipment relating to your performance must leave the venue immediately following the performance.

## NOISE

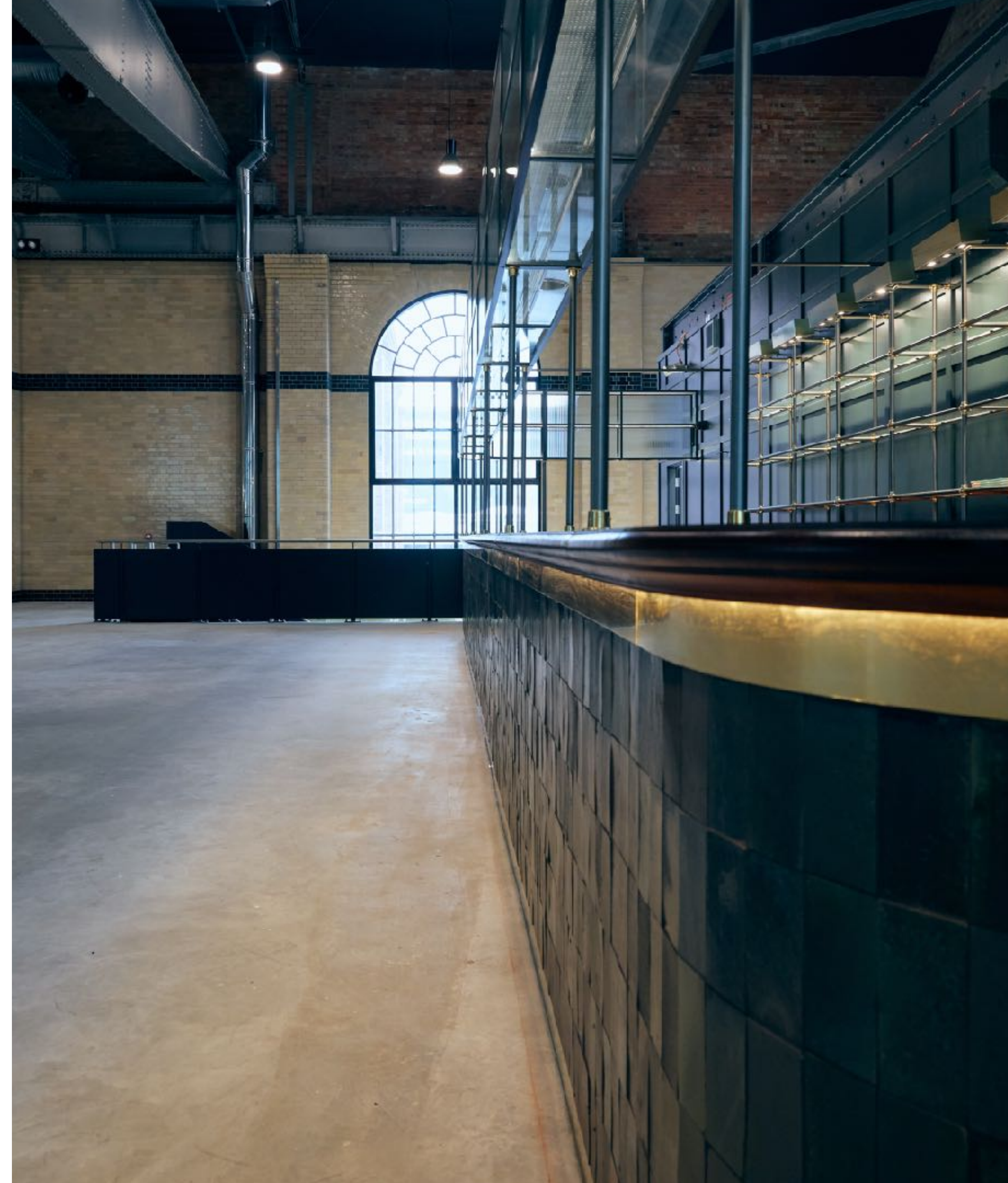
### SOUND CHECKS

Sound checks for performers and performances can be accommodated upon request in advance with the venue Production Manager.

### MANAGEMENT

Exhibition London are required to monitor audio levels externally to set the dB limit on a day-to-day basis.

Our licence to operate as a venue is dependent on sound engineers working with us to keep within these limits. Your co-operation is appreciated.





# ACCESS

- The loading bay is located at the rear of the venue, vehicles access this via Westfield's Service Yard A, via Ariel Way. Enter Service Yard A, turn around in the service yard and exit the service yard and drive over the road into Exhibition Loading Bay.
- To gain access into Westfield's Service Yard A, you need to have booked your vehicle into the Delivery Management System. Go to the website, register and then book your vehicles in no later than 48hours prior - <https://www.datascope.system.com/DHLWestfieldLandingPage>
- There is no restriction of vehicle size/weight, but only one lorry can access the loading bay at a time or 2 vans
- Timings - Articulated vehicles are permitted to make deliveries between 00:00 to 05:00 Monday to Sunday (inclusive), 18 tonne rigid vehicles and smaller vehicles (two transit vans or equivalent) are permitted to make deliveries at all times
- When unloading or loading barriers are needed next to the road, for the safety of the crew in the loading bay, as bus drive close by, these are provided by the venue
- Access into the venue is via the ground door at the loading bay via two large doors:
- Roller shutter door – 3,700mm wide x 1,900mm high
- Large double doors – 3,700mm wide x 2,114mm high
- Corridor access to ground floor event space for the loading bay with doors at 1560mm wide x 2000mm high
- Lift to first floor event space has a 2500kg SWL, 2800mm wide, 2960mm deep, 2000mm high
- There are 2 wide straight staircases to the first floor from the loading bay via double doors 1,250mm wide x 2000mm high if required
- Car doors at the front of the venue ground floor are 2,200mm wide x 2,030mm high
- All activity must happen within venue hours and with careful consideration to our neighbours.
- Equipment cannot be stored after the event and therefore all items must be removed before the hire period has completed.

## CREW

Crew can be supplied to suit requirements. Please contact the Production Manager to discuss your requirements and needs.

## STAFF ACCREDITATION

A copy of all accreditation and passes used at the event need to be provided to your Operations Manager and Head of Security four hours prior to doors.

## OPERATIONAL STAFF

Exhibition London Ops staff must be issued with a wristband on the day of the show to allow unrestricted access across the venue (with the exception of dressing rooms). The venue will require 10 x AAA passes for key staff and the senior team. This should give venue wide access with exception of dressing rooms.

## **BROADWICKLIVE**





# COSTS

Hire fee of £9,000 to operate shows (19:00 - 23:00)

Included in the venue hire fee:

- 2 x Sound Engineer + 1 x Lighting Engineer
- Staging & Barrier
- Standard Cleaning (Any additional may incur further charges)
- Security (Any additional charges based on risk assessment)
- Medics (Any additional charges based on risk assessment)
- Health & Safety Officer (Any additional charges based on risk assessment)
- Box Office Staff (1 X BOM & Scanning Staff)
- Backstage Wi-Fi

A refundable damage deposit of £5,000 for all events is required. The deposit will be returned, if no damage is caused, within 14 days post event.

If you require additional hours or build days, this can be arranged on request subject to an additional cost.

# OPTIONAL EXTRAS

- Wi-Fi
- Power
- Plant
- Additional Barrier
- Radios
- Overnight Load Out (Until 7AM): £1,000
- Merchandising Commission: 20% on gross from all merchandise sold
- Filming Facility Fee's (see next page).
- Additional Lighting / Audio Tech: £500 (Must be booked 1 month in advance)
- Rigger: £550 Per Shift (Double for load in & out: Must be booked 1 month in advance)
- Production Manager: £450 Per Day
- All prices quoted in this document exclude VAT.

**BROADWICKLIVE**





# MARKETING

All clients must submit advertising and promotional material in relation to their event for approval before releasing to the public. Events must not be advertised prior to confirmation of the event and the event team receiving a signed contract.

## PHOTOGRAPHY & FILMING

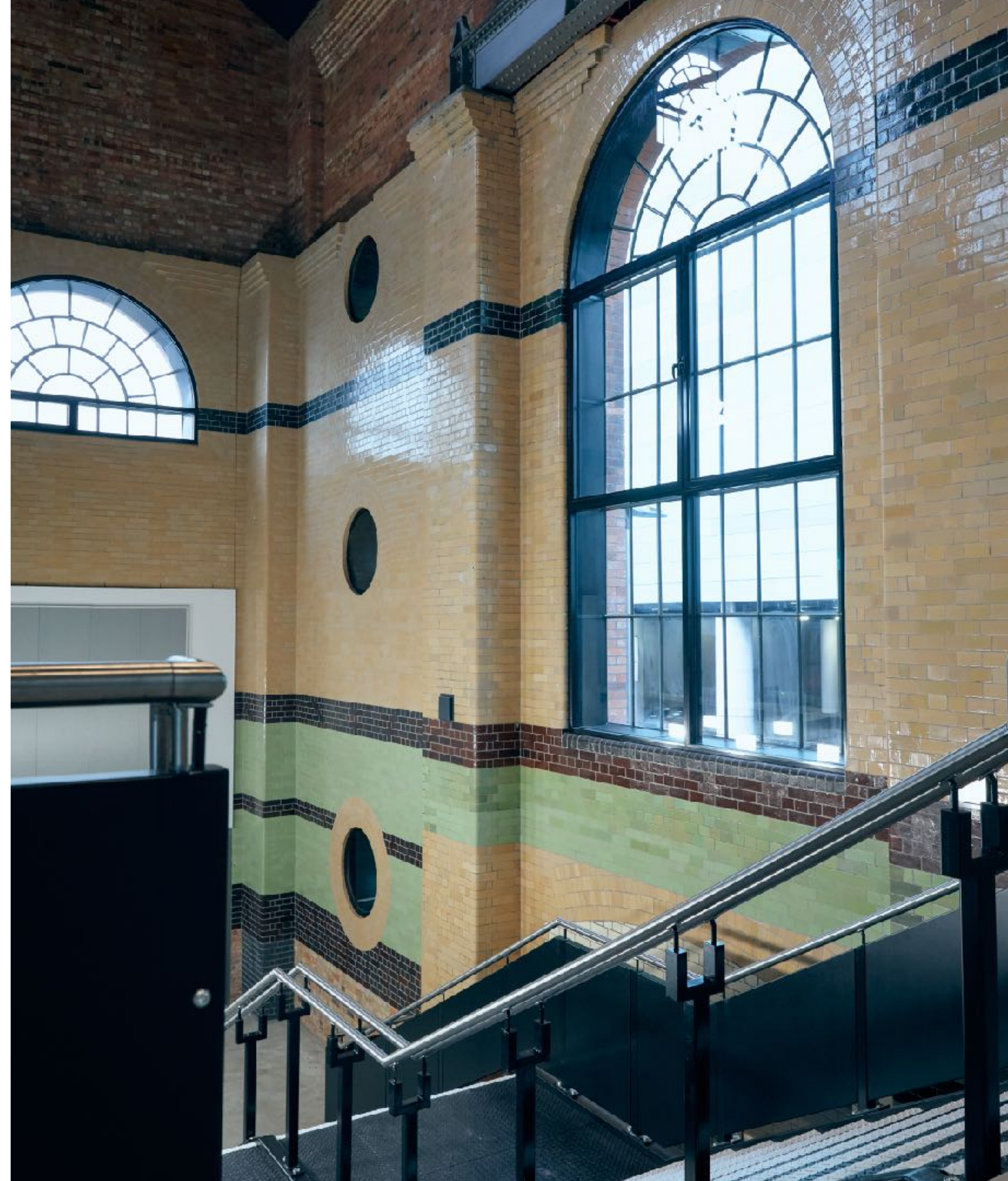
Filming and facility fee's are applicable per the following:

£500 - Archival use only, not released  
£1000 - Social Media, Online, Free-to-access streams  
£2000 - Full commercial release, DVD etc.

The venue also reserve the right to invite a photographer or videographer to events at the venue. This person will need an AAA and will be discussed prior to the event.

## SOCIAL MEDIA

We encourage all guests of the venue to tag Exhibition London.  
Instagram: @exhibitionldn  
Facebook: @exhibitionlondon  
Twitter: @exhibitionldn





# LOCATION & TRAVEL

## ADDRESS

ARIEL WAY, LONDON, W12 7SL

## Underground

- Four Underground stations provide easy access to Exhibition London, which is just a few minutes walk away.
- Central Line: Shepherd's Bush and White City.
- Hammersmith & City Line: Wood Lane and Shepherd's Bush Market.

## Overground

- The Shepherd's Bush National Rail station has direct connections to Willesden Junction, Kensington Olympia, West Brompton and Clapham Junction. Services run every 15 minutes in each direction Monday to Saturday, with 1-2 trains each hour on Sundays.

## Bus

- White City Bus Station: 31, 49, 148, 207, 237, 260, 607
- C1 Shepherd's Bush: 72, 94, 95, 220, 272, 283, 295, N207

## Parking

- Please use postcode W12 7SL to be directed to all car parks.



BROADWICKLIVE











exhibitionlondon.co.uk

Mark Newton - mark.newton@broadwicklive.com  
Ranen Ekubia - ranen.ekubia@broadwicklive.com

